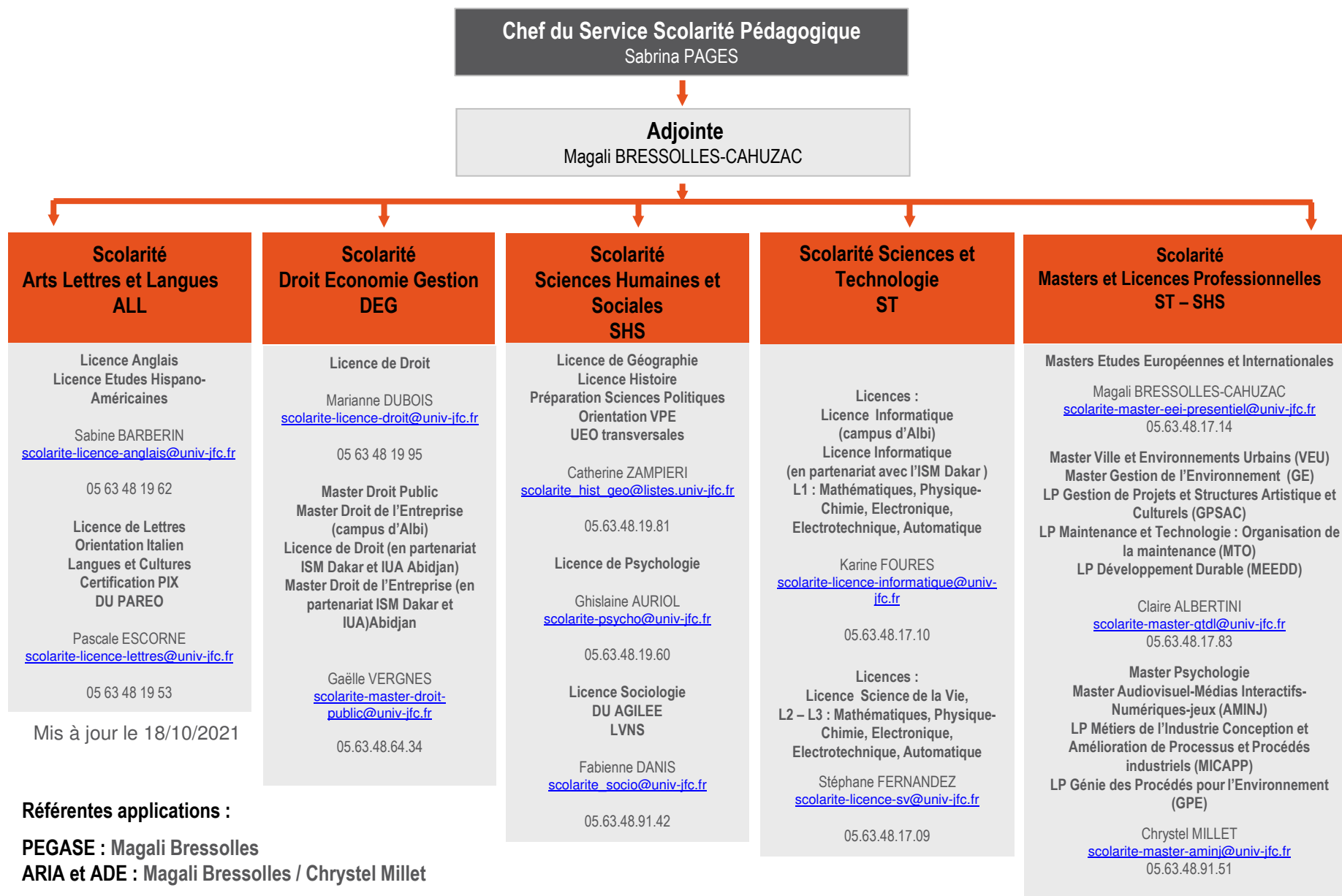
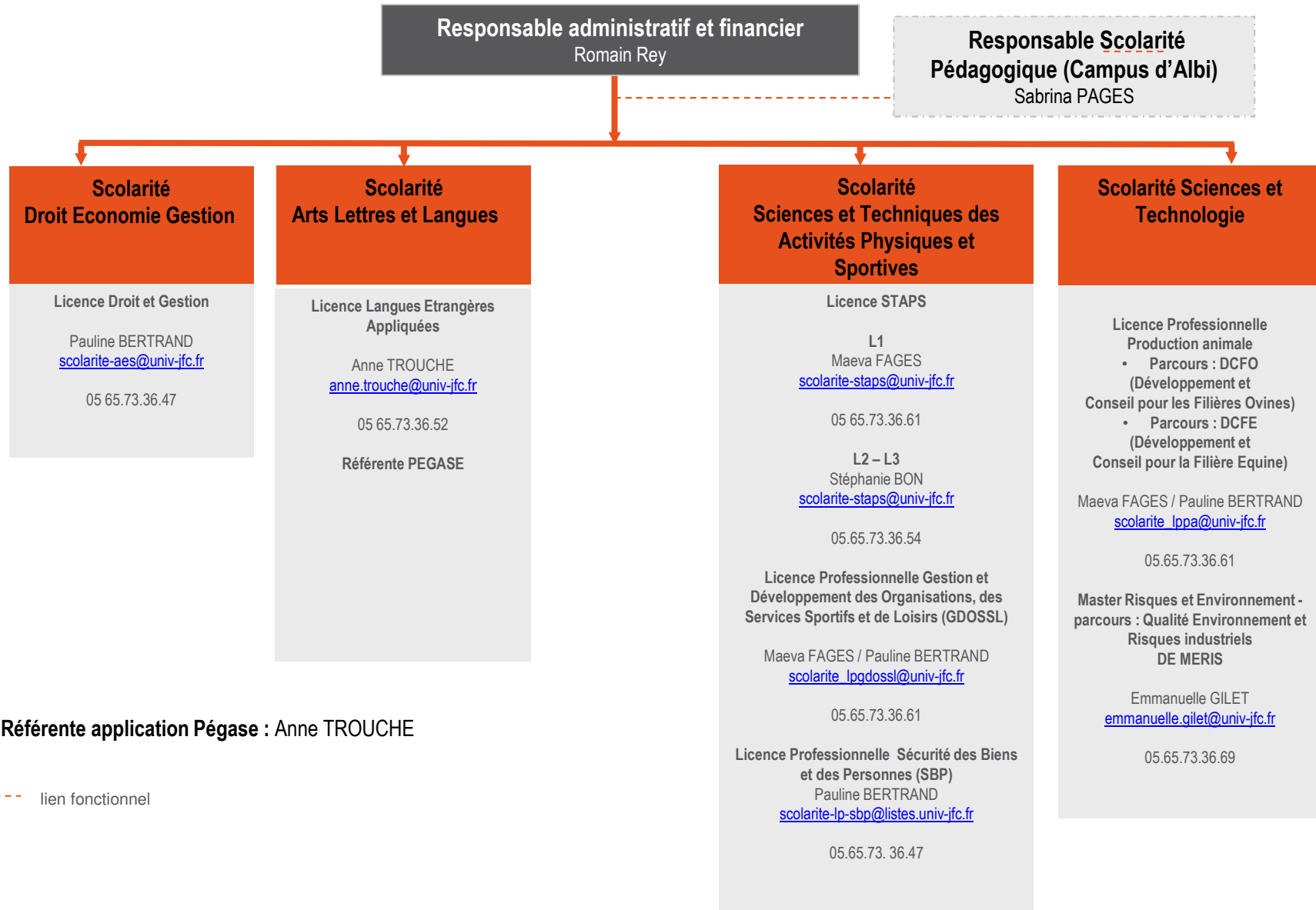


## ORGANIGRAMME DU SERVICE SCOLARITE PEDAGOGIQUE (Campus d'Albi)

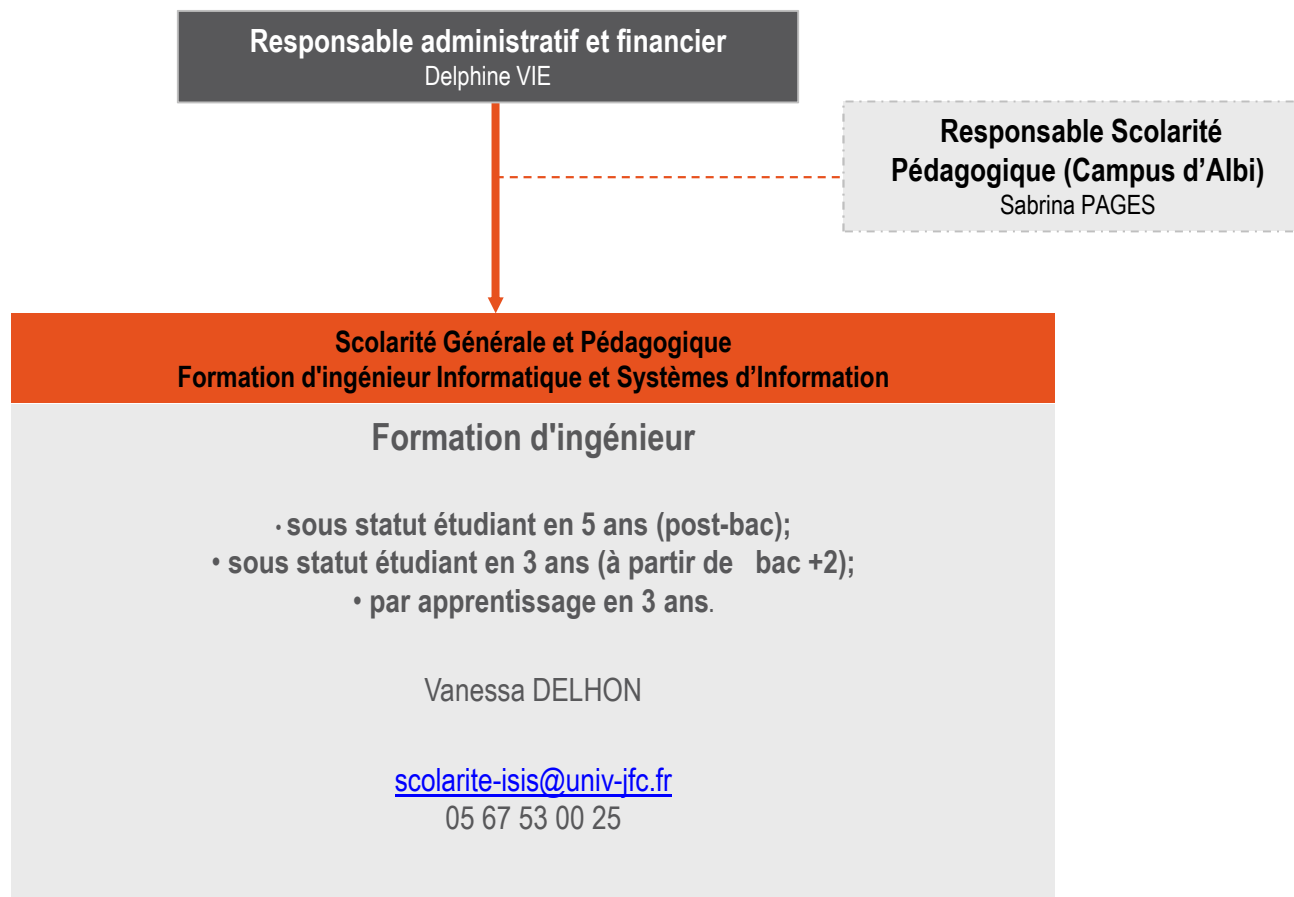


## ORGANIGRAMME DU SERVICE SCOLARITE PEDAGOGIQUE (Campus Rodez)



**Référente application Pégase : Anne TROUCHE**

## ORGANIGRAMME DU SERVICE SCOLARITE (Campus Castres)



- - - - - lien fonctionnel